

# Strengthening Local Policing

Future

Page 35

November 2016

# A Plan to Deliver the Priorities

## The MPS ambition is to be the safest global city in the world

- Every Community Safer, through: accountable and visible policing at the most local level, a step-change in the effectiveness of our services and a focus on protecting the vulnerable

A Safer London, through: tackling new and growing threats, freeing up 1,000 officers from existing services and better management of demand

- A Transformed, Modern and Efficient Met, that looks and feels more like London, with officers with the skills, tools and approach necessary to police London effectively,



Every Community Safer



A Safer London



A Transformed, Modern and Efficient Met

## Our strategic priorities emerging from the forthcoming Police and Crime plan

- Delivering “real” Neighbourhood Policing
- Protecting Children and Young People
- Violence against women and girls
- A criminal justice system for all Londoners
- Hate crime, Terrorism and Extremism

Reduce high volume low risk demand



Focus on high risk, low volume priority areas

## The Strengthening Local Policing Programme responds to these strategic drivers

- We will deliver local policing in a way that is **more personal and responsive**. It will also tackle crime and disorder effectively and efficiently across London as a whole.
- We will deliver this change in a way that **engages, involves and motivates our officers and staff** and that prepares the way for future change across London.
- We will **manage change in a way that empowers and devolves responsibility to our leaders** - so that they own and drive the change and that will deliver benefits to London.

# Benefits – investment in priorities

ONE  
MET  
MODEL 2020

## Neighbourhoods

- A minimum of 2 Dedicated Ward Officers (DWOs) and one PCSO per ward that will be 'ring fenced' from abstraction
- Additional DWOs to a total of over 1700 across London, allocated to higher demand wards through local consultation to address local priorities
- 281 Youth and Schools Officers rising to 600 working full-time in schools, PRUs and other educational institutions to prevent crime and protect young people – again allocated through local consultation
- Partnership and Prevention teams in every BCU (approximately 300 officers in total) providing specialist crime prevention/problem solving advice in line with 'Prevention First', owning strategic problems affecting the BCU as a whole and working jointly closely with partners
- All staff will be locally based, and work to deliver on local priorities developed via local consultation

Page 37

## Protecting Vulnerable People

- This will bring together local and previously centrally managed services that have been dealing with child abuse, rape and domestic violence in one place
- Bringing these resources together will enable us to provide a more joined up, victim-focused service, by delivering larger, more resilient multi skilled teams
- A 'single front door' bringing together MASH and CAIT referral arrangements will offer more efficient referrals, support, information sharing and effective partnership engagement
- Strengthened local accountability in delivering our joint safeguarding responsibilities
- Create a new, response functions to get the specialist skills straight to the scene of more serious crimes. Delivering immediate investigator – victim contact and reassurance at the earliest stage.
- Increased staffing – an additional 400 officers across London



# Benefits – greater efficiency

ONE  
MET  
MODEL 2020

## Response teams

- These teams will respond to emergency calls and deal with ongoing incidents. They provide a taskable resource in response to crime trends, public order aid and force mobilization.
- More efficient management will improve cross border deployments (currently only 1%) and improve call allocation to ensure the nearest unit attends the call (currently only occurring in 22% of calls)
- Investigating PIP Level 1 crime to offer immediate victim – investigator contact to improve victim care and ownership of investigations
- Reduced ‘handover’ of investigations improves efficiencies and prevents re working of enquiries already completed during an investigation.
- Management of their own prisoners will ensure effective evidence capture at the scene and more efficient processing
- Efficiency savings and demand reduction will allow reallocation of staff by 2020 to focus on risk and vulnerability.

## Local Investigations

- Teams of investigators will respond directly to the more serious and complex PIP Level 2 crimes, offering immediate victim – investigator contact.
- They will also deliver a proactive response to crime, disorder and offending, utilising traditional uniformed tasking teams alongside proactive units dealing with local priorities
- A new approach to tasking & co-ordination will mean that the BCU has increased visibility of and access to specialist teams
- Pathfinders will test more joined up response to organised crime at the local level

Page 38



# Leadership

## One BCU Commander – Chief Superintendent

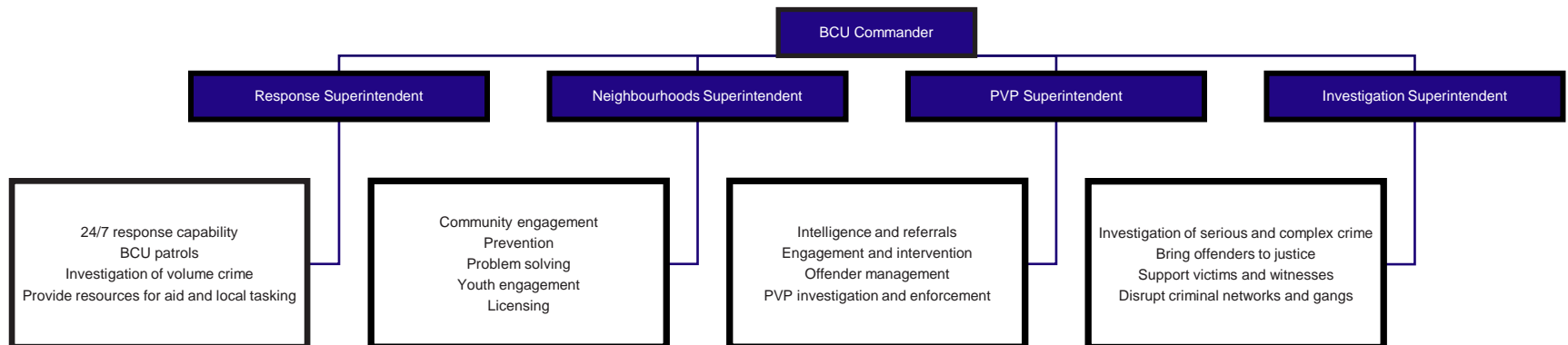
- Single point of contact and responsibility for the BCU
- Reduced number of BCU Commanders who are more empowered and influential across the MPS
- Maintain key relationships with Leaders and Chief Executives
- Enables removal of one 'chief officer' rank

## Four Superintendents responsible for functional service delivery across the BCU

- Improved 'specialism' within each function
- Ensure officers are responsible for similar demands and resources across the MPS
- Ensure senior officers are suitably trained and equipped for the portfolio they oversee
- Allows a 'delayered' management structure - removal of one rank within the BCU – giving streamlined decision making by empowered staff at the right level and reducing management costs

## Enough Commanders at Superintendent level

- Each borough will have one of the superintendents accountable for overall service delivery in the borough and providing a single point of contact for local stakeholders



# Pathfinder sites

## Governance

Pathfinder sites overseen through joint governance approach with local authorities

- 'Oversight Boards' co-chaired with local authority
- 'Project Boards' co-chaired with local authority
- 'Local Implementation Boards' chaired by BCU Commander
  - o deliver joint and transparent overview of
- Partnership and engagement processes
- Service impact at both BCU and individual borough levels
- Development of local priorities and performance monitoring, particularly with regard to vulnerability and youth services
- Impact on local relationships and ability of MPS to respond to local issues

## Success Factors

Critical success factors for the Pathfinders include:

- Does the BCU model support partnership through effective engagement and joint working?
- Does it position the MPS to deliver the requirements of the Policing and Crime Plan?
- Abstractions of DWOs and Youth officers will be monitored and reported on a monthly basis
- Delivery of improved outcomes for protecting vulnerable people
- Effective relationships with stakeholders will have been established and working
- Emergency response, crime levels, ASB and investigative/criminal justice performance will be maintained at both BCU and Borough level against corporate standards – reported monthly
- Success criteria will be finalised in conjunction with the Oversight Boards

# How many commands for London?

ONE  
MET  
MODEL 2020

## Demand and resources vary across boroughs resulting in inconsistency and inefficiency

- Resource: 282 officers in Kingston but 1185 in Westminster
- Crime: 48,000 PIP level 1 crimes in Westminster but only 9,900 in Kingston
- Emergency response: 21,000 '1' grade calls in Lambeth but only 6,800 in Richmond
- Domestic abuse: 3600 crimes at Croydon to 900 at Kensington and Chelsea
- Command: Borough Commander at Richmond commands 24% of the staff of Westminster
- Command team vary from 3 – 8 officers spread between 3 ranks C/Supt, Supt to C/Insp

Considerations;

- Commands to be of similar size and demand to offer standardisation and consistency – and a more even workload/level of risk for officers of the same rank
- Borough boundaries retained for Local Authority engagement
- Build team size around demand and apply consistent and more effective supervision ratios across London

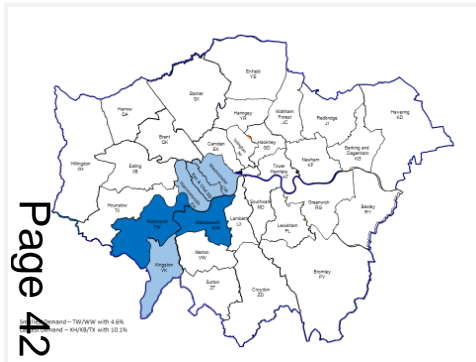
## We have considered options between 11 and 16 BCUs

- We have considered options in a range from 11 to 16 BCUs. Fewer than 11 means too broad a management ratio (greater than 1:10 superintendents to inspectors)
- More than 16 means that there is too much variation in size/demand (largest is 3x smallest)
- Teams (eg in emergency response) need to operate at sufficient size and scale to generate flexibility and realise efficiencies
- smaller commands make PVP teams with right level of specialism unsustainable (eg CAIT teams below 32 officers are not viable)
- Leadership structures need to be organised 'functionally' to get benefits from consistency and professionalism – more BCUs makes it increasingly inefficient (eg reducing PCs in favour of management and preventing consistent functional leadership across London)
- This led to a preference for a 12 BCU model as the best scale to realise the operational and organisational benefits



# What factors affect configuration of BCUs?

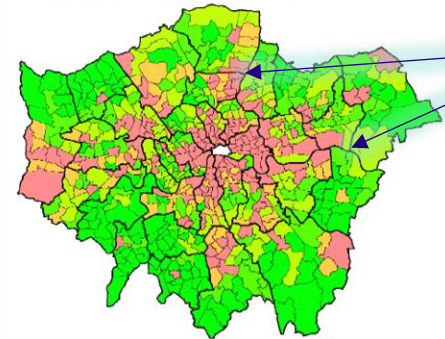
## 1. Existing relationships



Key considerations: eg

- Wandsworth and Richmond Local Authority
- Kingston (with its existing links to Richmond)

## 2. Infrastructure that influences deployment



Notable physical boundaries, eg

- Lea Valley corridor
- River crossing particularly East London

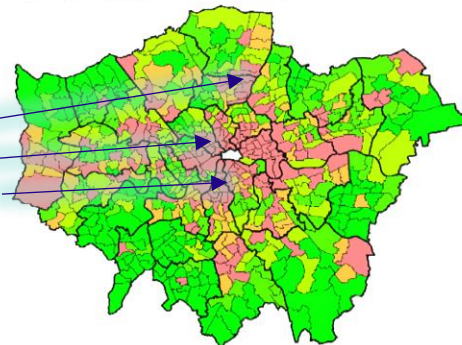
Major transport routes

## 3. Operational factors

There are some notable cross-borough crime patterns, eg

- Enfield and Haringey
- Camden and Islington
- Lambeth and Southwark

Total Notifiable Offences  
2016



## 4. Build of options in manageable and achievable configurations

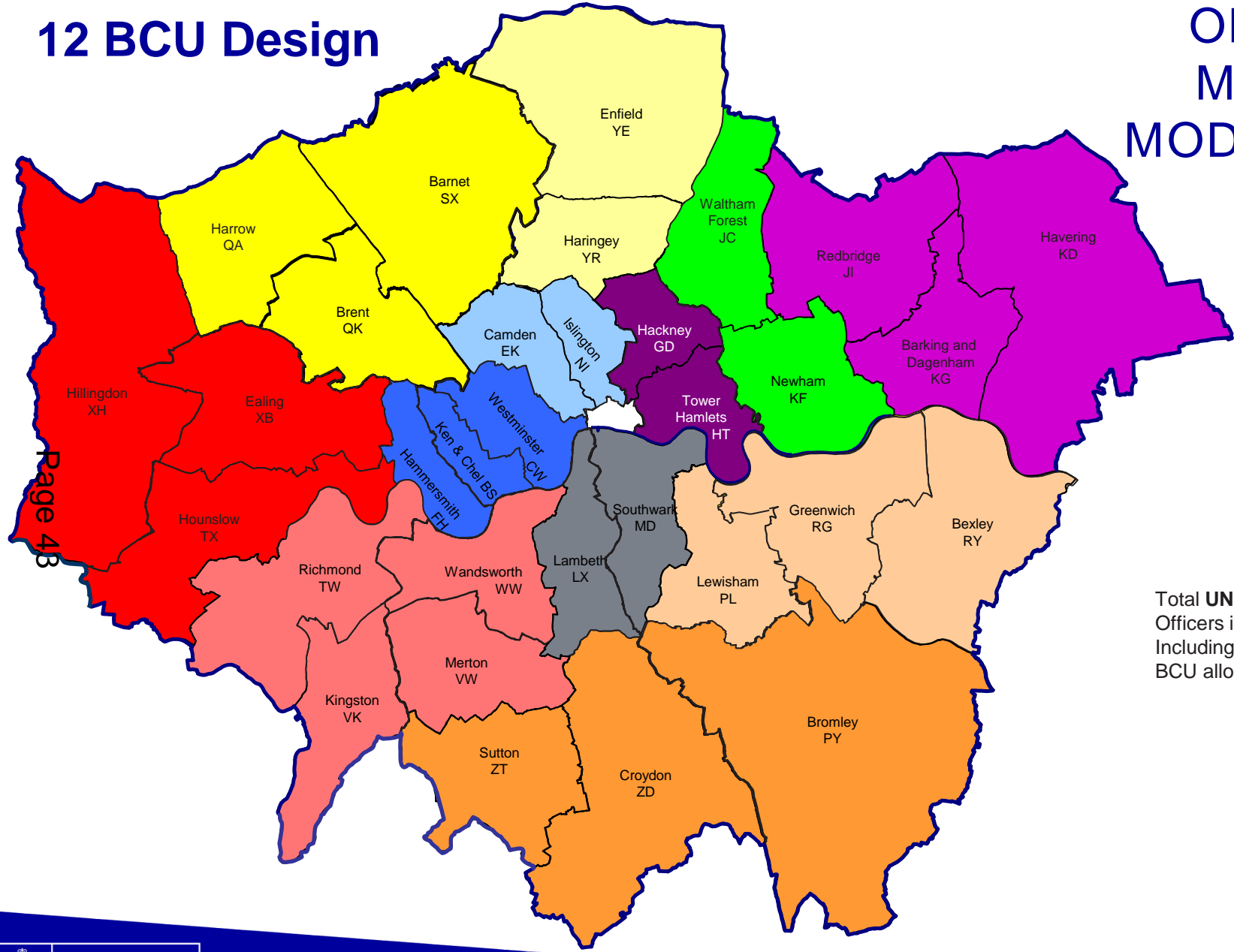
Key considerations:

- Central London – should Westminster be with Hammersmith & Fulham and Kensington & Chelsea?
- Optimum scale and configuration of BCUs in South and East London
- Viability of any single borough command.



# 12 BCU Design

ONE  
MET  
MODEL 2020



Page 48

Total **UNFUNDED**  
Officers in 2020  
Including SCO17  
BCU allocation

This page is intentionally left blank